

GREEN FIELD



NURSERY SITE
16/04073/APP
PENDING

APPROVED OFFICE
16/04039/APP

NURSERY
STORAGE
AREA

EXISTING CAR PARK 2070
PROPOSED BUSINESS
START-UP SITE

FIRST SHED 2011

APPROVED
WASTE FACILITY
HATCHED YELLOW
(concrete base)

PROPOSED SKIP
STORAGE SITE

GREEN FIELD

RAILWAY TRACK

263m

230m

POND

POND

CONTEXTURAL PLAN

THE BENEFITS OF CONTAINMENT WALLS:

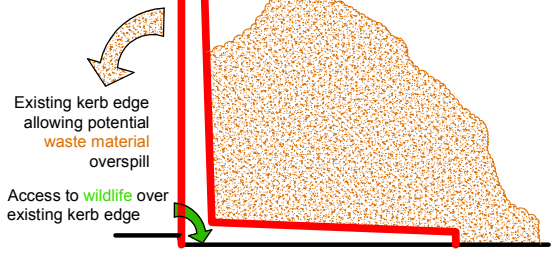
The existing approved kerb edge was specifically designed to contain surface water only, it is not sufficient to prevent waste materials over-spilling on the surrounding vegetation and habitats or stop wildlife from entering and becoming trapped within the site. The introduction of the containment walls will not only contain waste materials within the site, thus preventing any harmful impact on surrounding vegetation, water courses and wildlife habitats, but also act as a barrier to any wildlife entering and being trapped within the site.

Contrary to the officer's contention, the introduction of the concrete perimeter walls will result in mitigating any potential harm to any surrounding wildlife or habitats.

Typical 3.6m concrete perimeter containment walls shown edged red on the plan

SECTION

Typical 2m high waste material stockpile



concrete perimeter walls sit on existing concrete yard surface that remains undisturbed (ie NO DIGGING-IN!)

'L' SHAPED SHED APPROVED
13/20003/AWD
SHEDS 'A' and 'B' BUILT WITHIN THE SAME FOOTPRINT
A section built at the correct height
B section built higher than approved but no higher than A



1st Floor Chambers
12 Market Square, Winslow
Bucks MK18 3AF
T 01296 715965
E office@achplanning.co.uk